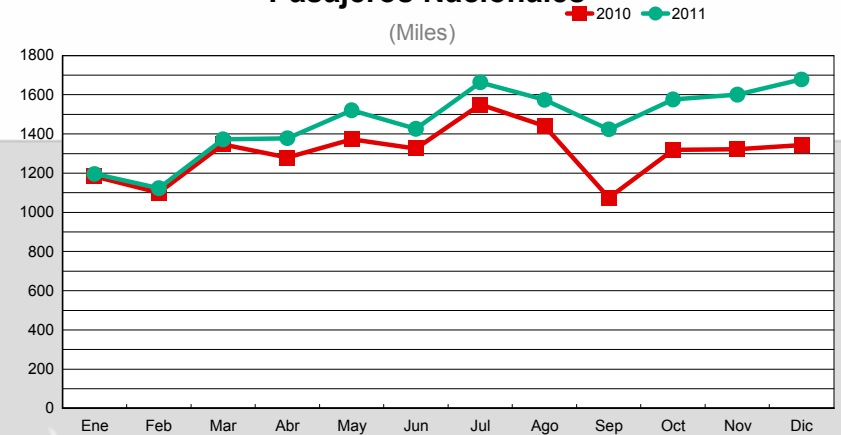


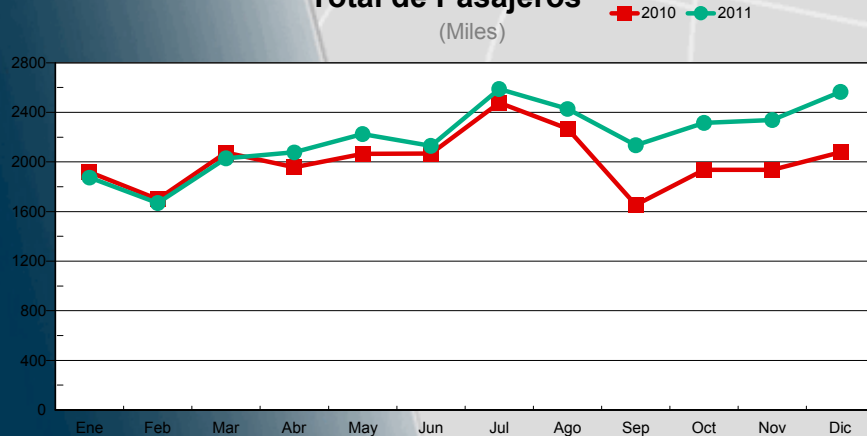
## PASAJEROS

	2010			2011			VAR. %		Total
	NAL	INT	Total	NAL	INT	Total	NAL	INT	
Ene	1,178,273	739,391	1,917,664	1,190,266	683,128	1,873,394	1.02	-7.61	-2.31
Feb	1,096,485	602,186	1,698,671	1,119,392	548,484	1,667,876	2.09	-8.92	-1.81
Mar	1,339,342	736,143	2,075,485	1,367,886	661,125	2,029,011	2.13	-10.19	-2.24
Abr	1,272,295	684,469	1,956,764	1,373,237	703,463	2,076,700	7.93	2.77	6.13
May	1,366,910	698,643	2,065,553	1,516,557	707,729	2,224,286	10.95	1.30	7.68
Jun	1,321,155	746,299	2,067,454	1,420,400	709,752	2,130,152	7.51	-4.90	3.03
Jul	1,543,000	934,338	2,477,338	1,653,995	934,105	2,588,100	7.19	-0.02	4.47
Ago	1,434,625	832,830	2,267,455	1,566,803	860,103	2,426,906	9.21	3.27	7.03
Sep	1,068,418	585,504	1,653,922	1,417,099	717,580	2,134,679	32.64	22.56	29.07
Oct	1,312,632	623,427	1,936,059	1,570,312	744,712	2,315,024	19.63	19.45	19.57
Nov	1,316,600	620,096	1,936,696	1,595,012	743,528	2,338,540	21.15	19.91	20.75
Dic	1,337,333	740,141	2,077,474	1,670,479	893,714	2,564,193	24.91	20.75	23.43
<b>Sub Total</b>	<b>15,587,068</b>	<b>8,543,467</b>	<b>24,130,535</b>	<b>17,461,438</b>	<b>8,907,423</b>	<b>26,368,861</b>	<b>12.03</b>	<b>4.26</b>	<b>9.28</b>
<b>Total</b>	<b>15,587,068</b>	<b>8,543,467</b>	<b>24,130,535</b>	<b>17,461,438</b>	<b>8,907,423</b>	<b>26,368,861</b>			

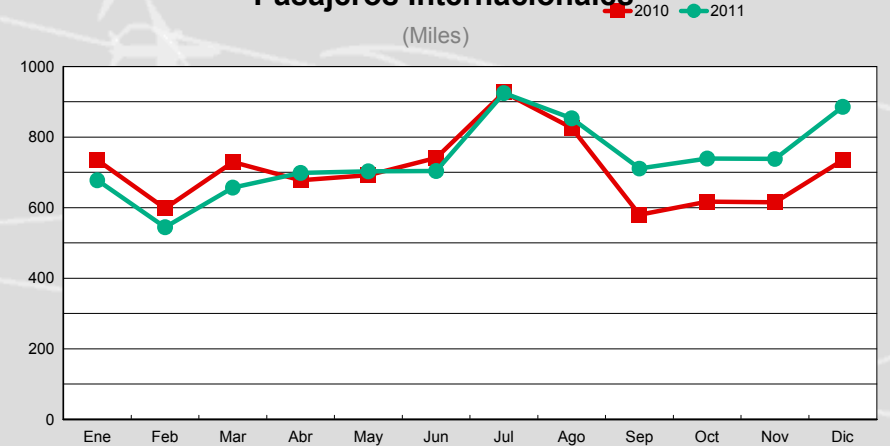
### Pasajeros Nacionales



### Total de Pasajeros



### Pasajeros Internacionales

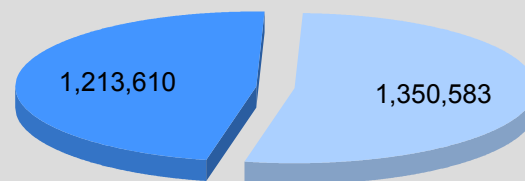
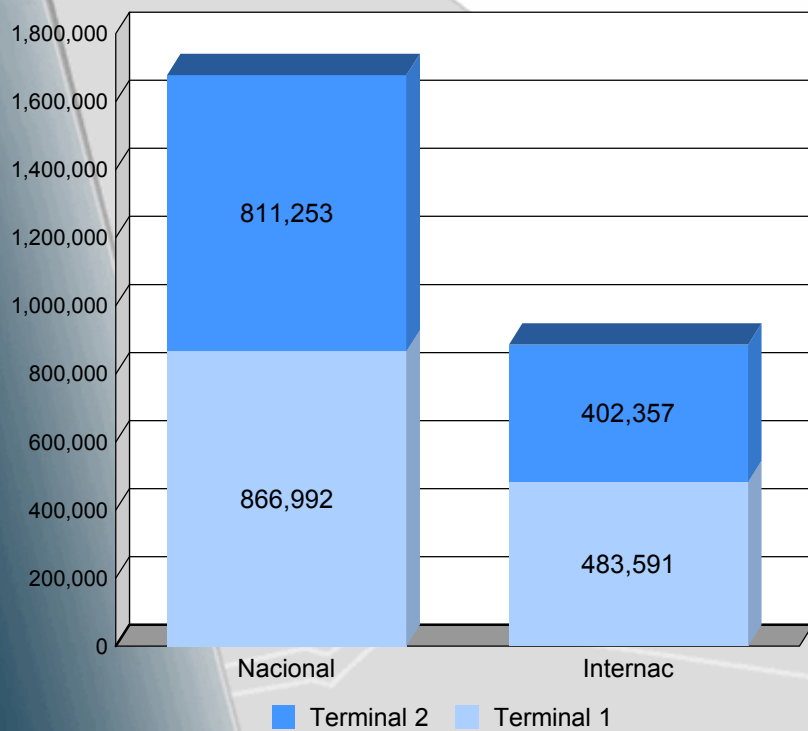


Nota: La variación porcentual a partir de septiembre es visiblemente mayor en virtud del cese de operaciones de Grupo Mexicana, el cual se presentó a partir del 28 de agosto del 2010.

## PASAJEROS POR TERMINAL

	TERMINAL 1					TERMINAL 2					TOTALES				
	Nacional		Internacional		Total	Nacional		Internacional		Total	Nacional		Internacional		Gran Total
	Llegadas	salidas	Llegadas	salidas		Llegadas	salidas	Llegadas	salidas		Llegadas	salidas	Llegadas	salidas	
Ene	266,220	<b>243,450</b>	<b>148,793</b>	146,594	805,057	350,461	330,135	199,499	188,242	1,068,337	616,681	573,585	348,292	334,836	<b>1,873,394</b>
Feb	231,385	<b>232,261</b>	<b>123,171</b>	119,283	706,100	326,762	328,984	150,302	155,728	961,776	558,147	561,245	273,473	275,011	<b>1,667,876</b>
Mar	297,753	<b>303,901</b>	<b>145,571</b>	151,314	898,539	383,778	382,454	175,210	189,030	1,130,472	681,531	686,355	320,781	340,344	<b>2,029,011</b>
Abr	313,841	<b>324,076</b>	<b>152,054</b>	168,441	958,412	367,086	368,234	183,004	199,964	1,118,288	680,927	692,310	335,058	368,405	<b>2,076,700</b>
May	345,863	<b>344,471</b>	<b>158,824</b>	162,393	1,011,551	413,805	412,418	194,556	191,956	1,212,735	759,668	756,889	353,380	354,349	<b>2,224,286</b>
Jun	317,145	<b>318,147</b>	<b>165,133</b>	163,575	964,000	386,766	398,342	194,383	186,661	1,166,152	703,911	716,489	359,516	350,236	<b>2,130,152</b>
Jul	409,647	<b>411,362</b>	<b>205,113</b>	219,138	1,245,260	414,042	418,944	245,932	263,922	1,342,840	823,689	830,306	451,045	483,060	<b>2,588,100</b>
Ago	380,512	<b>377,020</b>	<b>205,745</b>	196,375	1,159,652	408,072	401,199	234,059	223,924	1,267,254	788,584	778,219	439,804	420,299	<b>2,426,906</b>
Sep	345,707	<b>343,863</b>	<b>167,028</b>	171,398	1,027,996	363,378	364,151	186,272	192,882	1,106,683	709,085	708,014	353,300	364,280	<b>2,134,679</b>
Oct	376,979	<b>385,001</b>	<b>182,885</b>	165,489	1,110,354	398,665	409,667	199,954	196,384	1,204,670	775,644	794,668	382,839	361,873	<b>2,315,024</b>
Nov	393,858	<b>395,676</b>	<b>205,591</b>	188,346	1,183,471	402,223	403,255	177,816	171,775	1,155,069	796,081	798,931	383,407	360,121	<b>2,338,540</b>
Dic	419,305	<b>446,442</b>	<b>249,638</b>	235,198	1,350,583	386,035	418,697	206,340	202,538	1,213,610	805,340	865,139	455,978	437,736	<b>2,564,193</b>
<b>TOTAL</b>	<b>4,098,215</b>	<b>4,125,670</b>	<b>2,109,546</b>	<b>2,087,544</b>	<b>12,420,975</b>	<b>4,601,073</b>	<b>4,636,480</b>	<b>2,347,327</b>	<b>2,363,006</b>	<b>13,947,886</b>	<b>8,699,288</b>	<b>8,762,150</b>	<b>4,456,873</b>	<b>4,450,550</b>	<b>26,368,861</b>

# Aeropuerto Internacional de la Ciudad de México



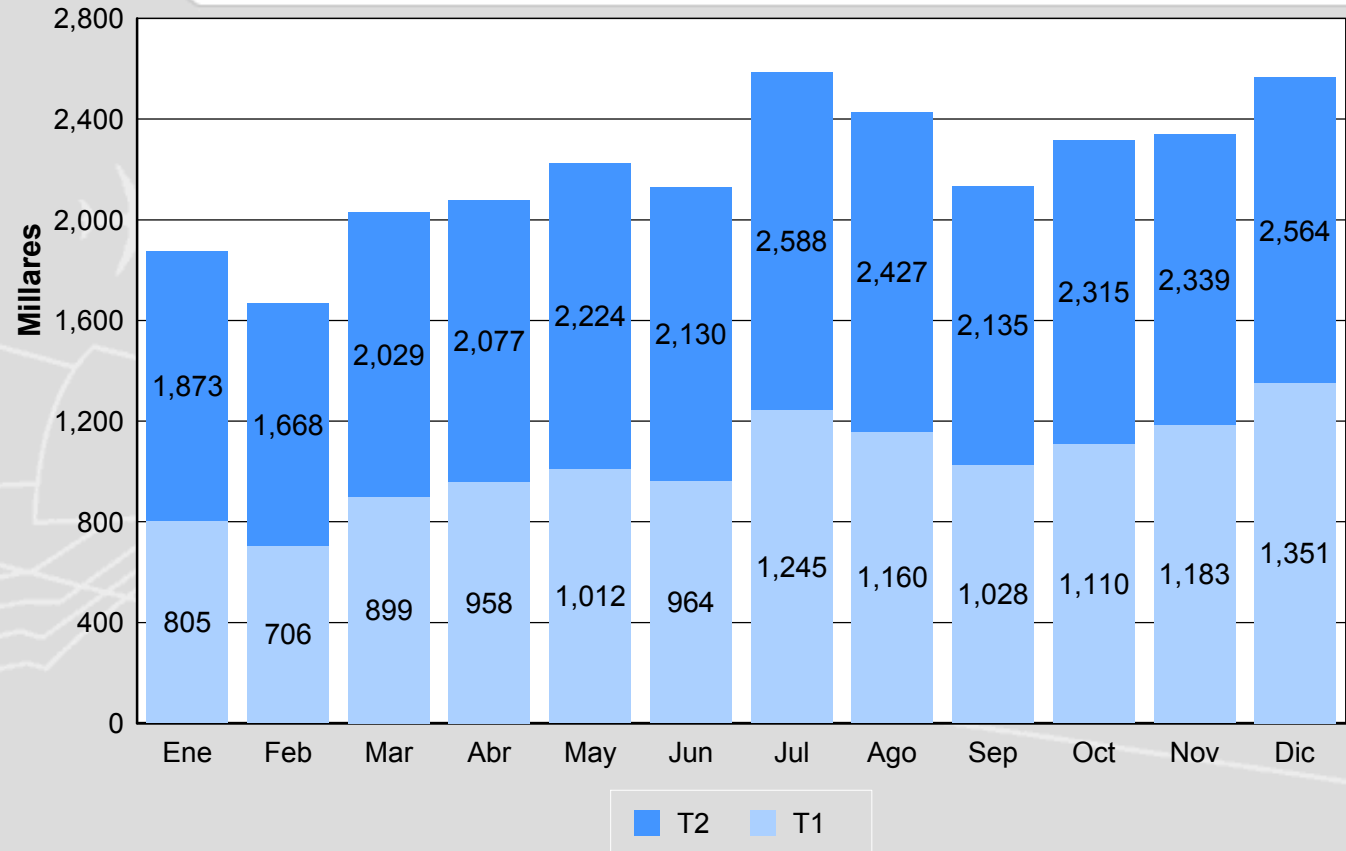
T1 T2



2011

Diciembre

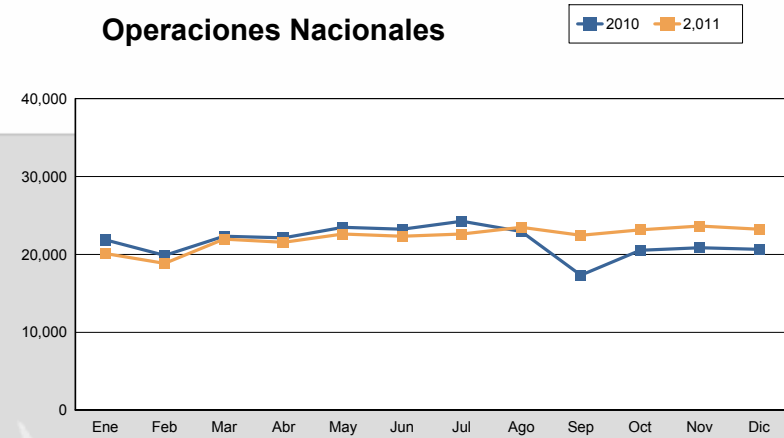
### PASAJEROS POR TERMINAL



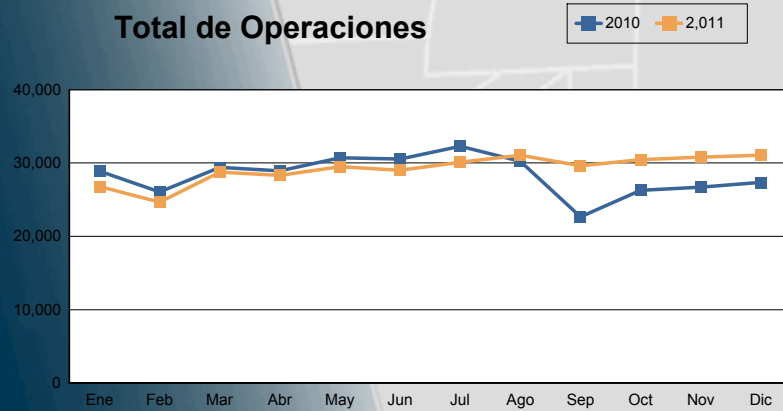
## OPERACIONES

	2010			2011			VAR. %		
	NAL	INT	Total	NAL	INT	Total	NAL	INT	Total
Ene	21,859	7,002	28,861	20,103	6,671	26,774	-8.03	-4.73	-7.23
Feb	19,881	6,164	26,045	18,840	5,815	24,655	-5.24	-5.66	-5.34
Mar	22,347	7,032	29,379	21,962	6,794	28,756	-1.72	-3.38	-2.12
Abr	22,126	6,791	28,917	21,540	6,766	28,306	-2.65	-0.37	-2.11
May	23,467	7,231	30,698	22,619	6,877	29,496	-3.61	-4.90	-3.92
Jun	23,217	7,304	30,521	22,337	6,653	28,990	-3.79	-8.91	-5.02
Jul	24,272	8,017	32,289	22,622	7,483	30,105	-6.80	-6.66	-6.76
Ago	22,929	7,280	30,209	23,481	7,595	31,076	2.41	4.33	2.87
Sep	17,336	5,337	22,673	22,457	7,140	29,597	29.54	33.78	30.54
Oct	20,525	5,731	26,256	23,155	7,279	30,434	12.81	27.01	15.91
Nov	20,849	5,863	26,712	23,640	7,141	30,781	13.39	21.80	15.23
Dic	20,662	6,676	27,338	23,230	7,832	31,062	12.43	17.32	13.62
<b>Sub Total</b>	<b>259,470</b>	<b>80,428</b>	<b>339,898</b>	<b>265,986</b>	<b>84,046</b>	<b>350,032</b>	<b>2.51</b>	<b>4.50</b>	<b>2.98</b>
<b>Total</b>	<b>259,470</b>	<b>80,428</b>	<b>339,898</b>	<b>265,986</b>	<b>84,046</b>	<b>350,032</b>			

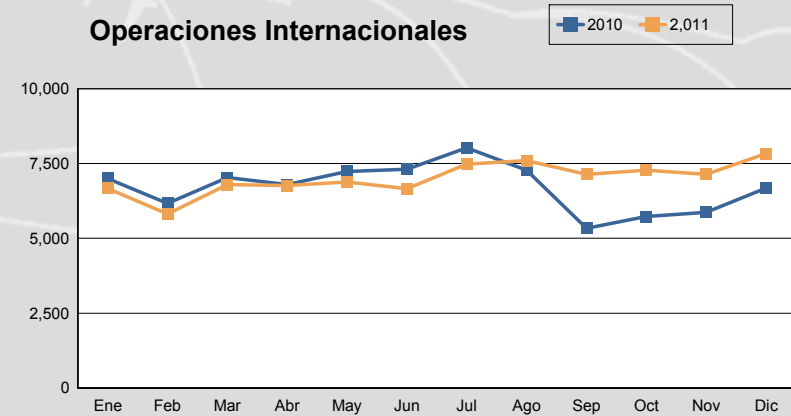
### Operaciones Nacionales



### Total de Operaciones



### Operaciones Internacionales



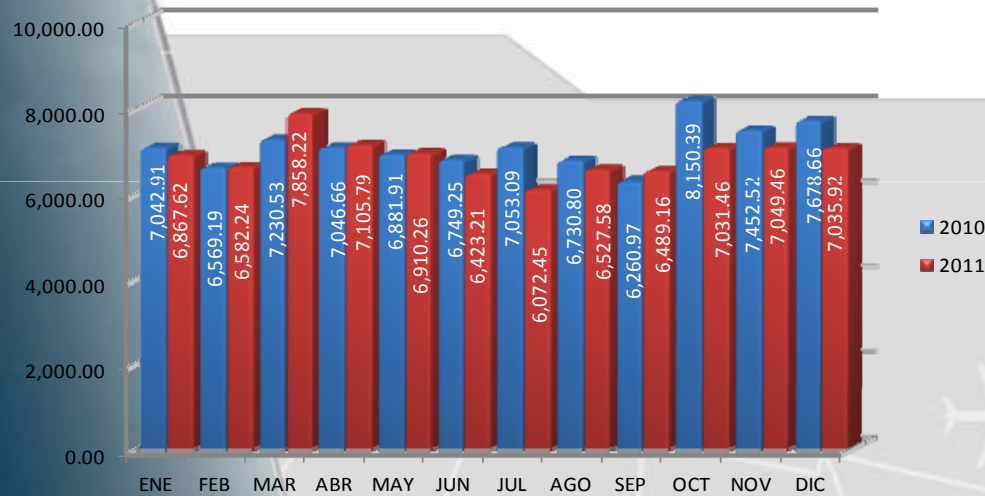
Nota: La variación porcentual a partir de septiembre es visiblemente mayor en virtud del cese de operaciones de Grupo Mexicana, el cual se presentó a partir del 28 de agosto del 2010.

## OPERACIONES POR ORIGEN Y TIPO

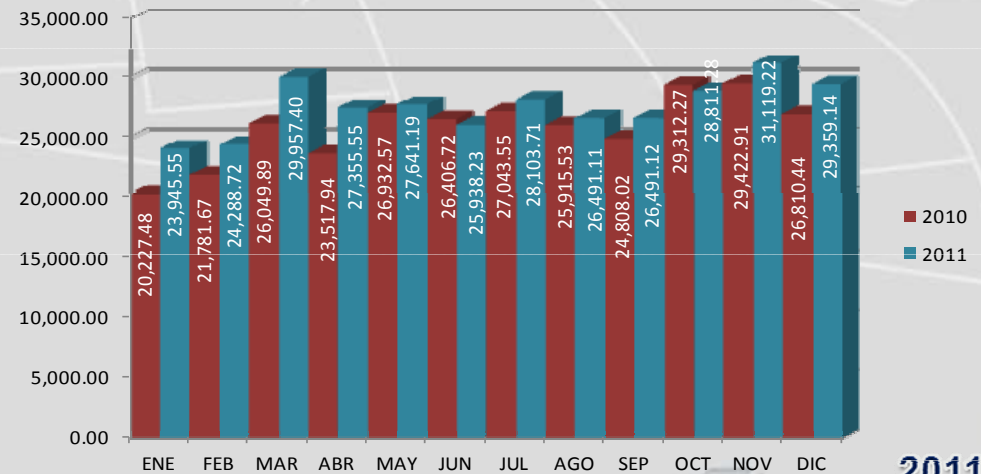
	2010						2011						Comercial (Pax)	
	NACIONAL			INTERNACIONAL			NACIONAL			INTERNACIONAL			VAR. %	
	Comercial Pax	Carga	Aviación General	Comercial Pax	Carga	Aviación General	Comercial Pax	Carga	Aviación General	Comercial Pax	Carga	Aviación General	Nac.	Int.
Ene	19,444	676	1,739	6,600	394	8	17,163	528	2,412	6,162	493	16	-11.73	-6.64
Feb	17,584	521	1,776	5,713	437	14	15,752	505	2,583	5,299	506	10	-10.42	-7.25
Mar	20,054	489	1,804	6,494	527	11	18,857	612	2,493	6,140	644	10	-5.97	-5.45
Abr	19,527	484	2,115	6,311	468	12	18,586	508	2,446	6,185	569	12	-4.82	-2.00
May	20,882	458	2,127	6,669	551	11	19,524	527	2,568	6,285	576	16	-6.50	-5.76
Jun	20,607	515	2,095	6,762	532	10	19,275	540	2,522	6,086	553	14	-6.46	-10.00
Jul	21,832	498	1,942	7,482	520	15	19,999	565	2,058	6,887	583	13	-8.40	-7.95
Ago	20,614	466	1,849	6,737	533	10	20,460	625	2,396	6,991	598	6	-0.75	3.77
Sep	14,814	456	2,066	4,777	541	19	19,516	531	2,410	6,504	612	24	31.74	36.15
Oct	17,260	509	2,756	5,132	575	24	20,346	509	2,300	6,634	621	24	17.88	29.27
Nov	17,234	517	3,098	5,264	569	30	20,483	501	2,656	6,434	651	56	18.85	22.23
Dic	17,625	623	2,414	6,117	529	30	20,859	545	1,826	7,225	593	14	18.35	18.11
<b>SUBTOTAL</b>	<b>227,477</b>	<b>6,212</b>	<b>25,781</b>	<b>74,058</b>	<b>6,176</b>	<b>194</b>	<b>230,820</b>	<b>6,496</b>	<b>28,670</b>	<b>76,832</b>	<b>6,999</b>	<b>215</b>	<b>1.47</b>	<b>3.75</b>
<b>TOTAL</b>	<b>227,477</b>	<b>6,212</b>	<b>25,781</b>	<b>74,058</b>	<b>6,176</b>	<b>194</b>	<b>230,820</b>	<b>6,496</b>	<b>28,670</b>	<b>76,832</b>	<b>6,999</b>	<b>215</b>		

	CARGA EN TONELADAS								
	2010			2011			Variación Porcentual		
	NAC	INTER	TOTAL	NAC	INTER	TOTAL	NAC	INTER	TOTAL
<b>ENE</b>	7,042.91	20,227.48	27,270.39	6,867.62	23,945.55	30,813.17	-2.49	18.38	12.99
<b>FEB</b>	6,569.19	21,781.67	28,350.86	6,582.24	24,288.72	30,870.96	0.20	11.51	8.89
<b>MAR</b>	7,230.53	26,049.89	33,280.42	7,858.22	29,957.40	37,815.62	8.68	15.00	13.63
<b>ABR</b>	7,046.66	23,517.94	30,564.60	7,105.79	27,355.55	34,461.34	0.84	16.32	12.75
<b>MAY</b>	6,881.91	26,932.57	33,814.48	6,910.26	27,641.19	34,551.45	0.41	2.63	2.18
<b>JUN</b>	6,749.25	26,406.72	33,155.97	6,423.21	25,938.23	32,361.44	-4.83	-1.77	-2.40
<b>JUL</b>	7,053.09	27,043.55	34,096.64	6,072.45	28,103.71	34,176.16	-13.90	3.92	0.23
<b>AGO</b>	6,730.80	25,915.53	32,646.33	6,527.58	26,491.11	33,018.69	-3.02	2.22	1.14
<b>SEP</b>	6,260.97	24,808.02	31,068.99	6,489.16	26,491.12	32,980.28	3.64	6.78	6.15
<b>OCT</b>	8,150.39	29,312.27	37,462.66	7,031.46	28,811.28	35,842.74	-13.73	-1.71	-4.32
<b>NOV</b>	7,452.52	29,422.91	36,875.43	7,049.46	31,119.22	38,168.68	-5.41	5.77	3.51
<b>DIC</b>	7,678.66	26,810.44	34,489.10	7,035.92	29,359.14	36,395.06	-8.37	9.51	5.53
<b>Subtotal</b>	84,846.88	308,228.99	393,075.87	81,953.37	329,502.22	411,455.59	-3.41	6.90	4.68
<b>Total</b>	84,846.88	308,228.99	393,075.87						

### CARGA NACIONAL



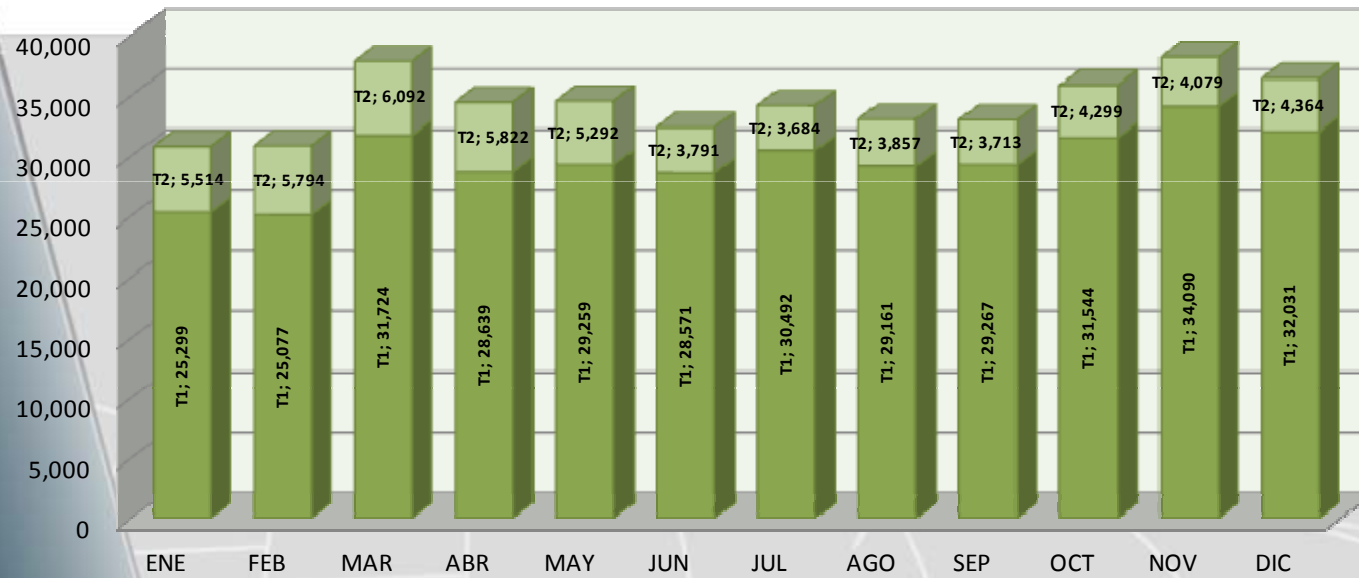
### CARGA INTERNACIONAL



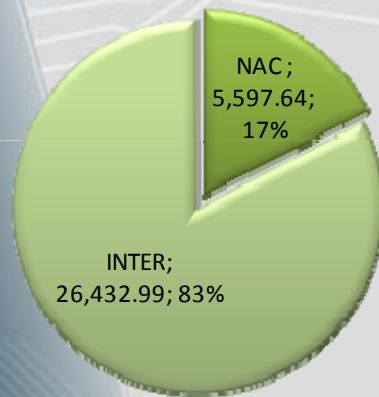
2011



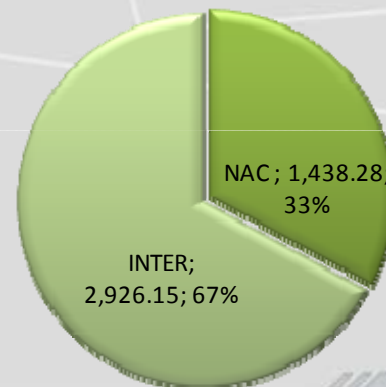
Carga en Toneladas



TERMINAL 1



TERMINAL 2



Septiembre