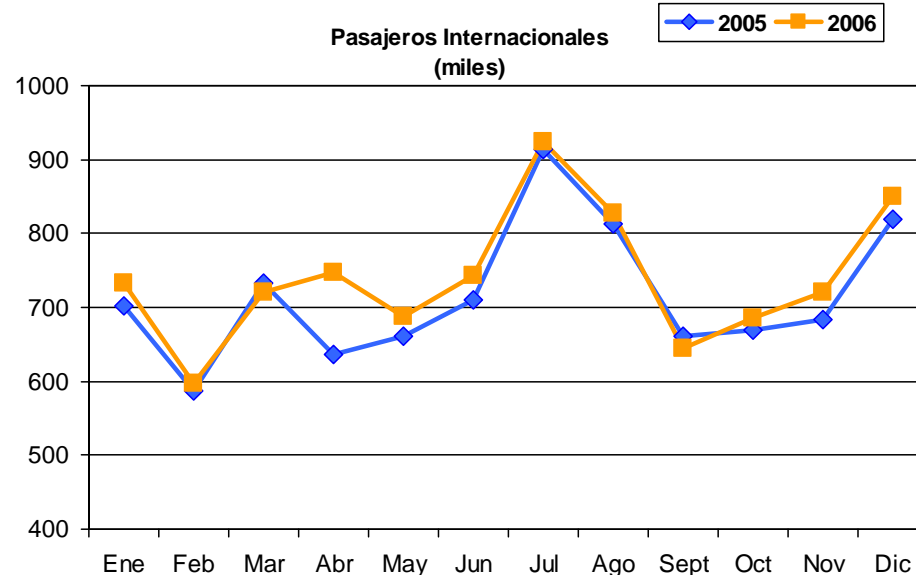
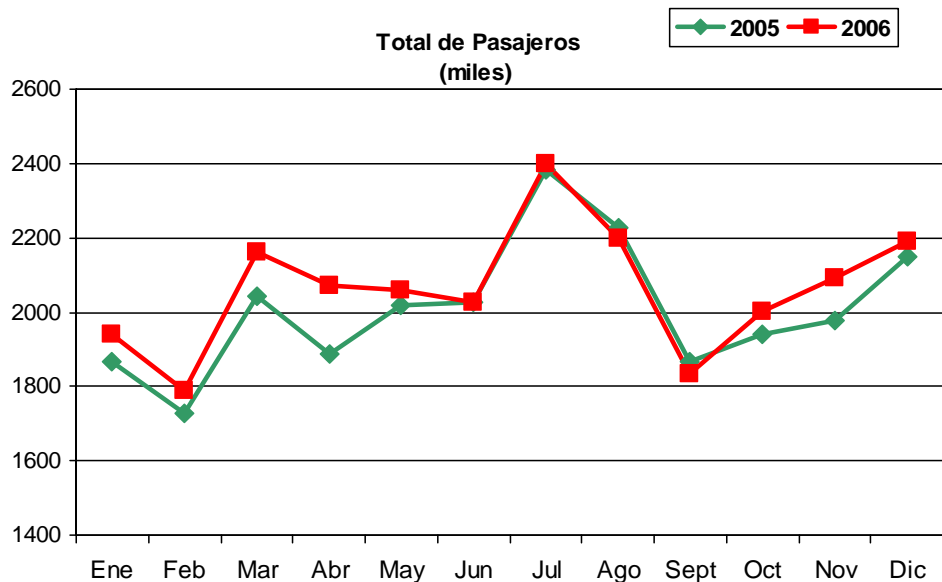
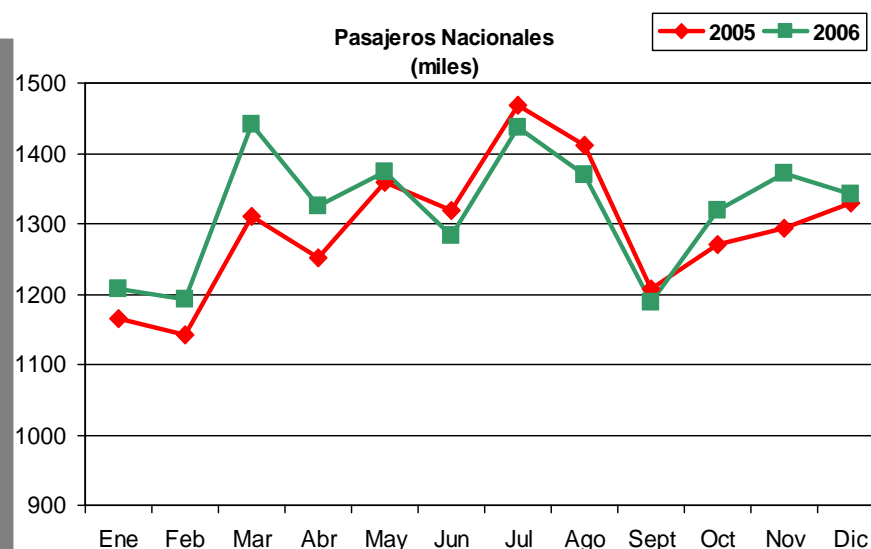
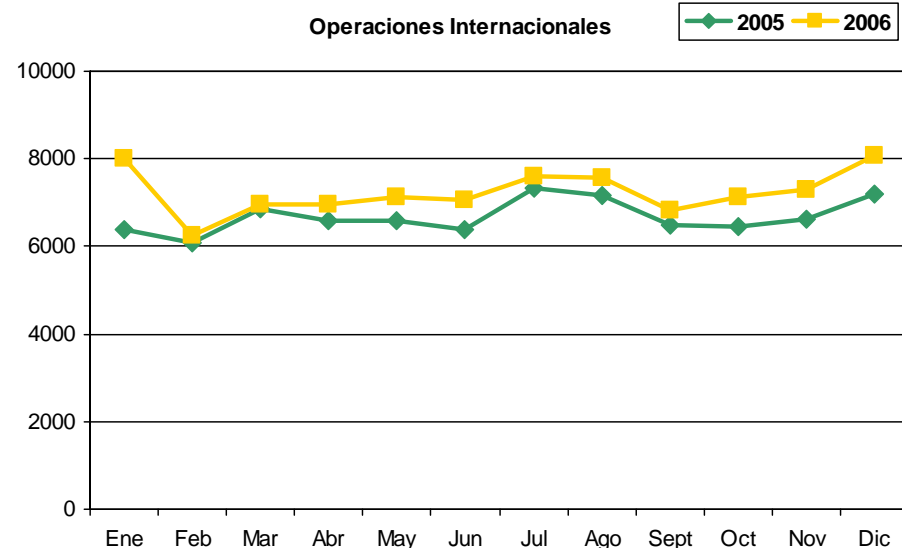
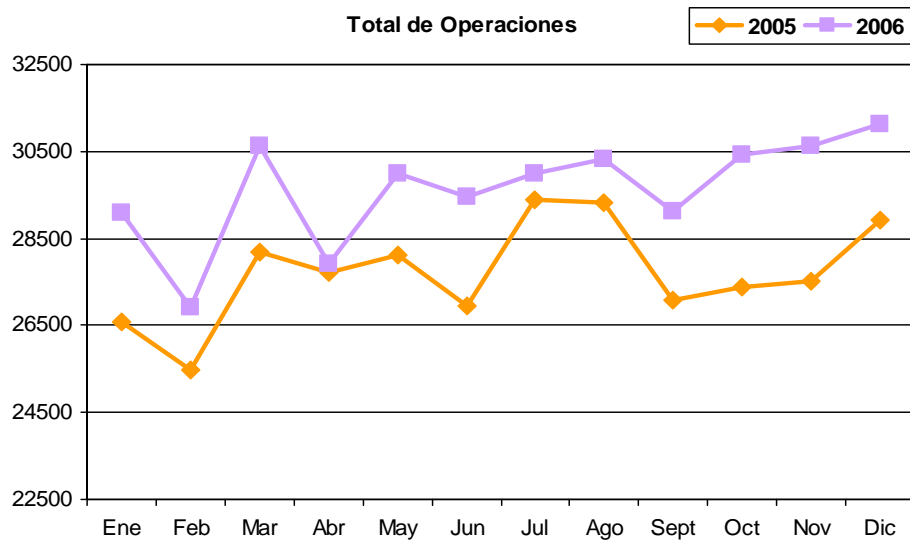
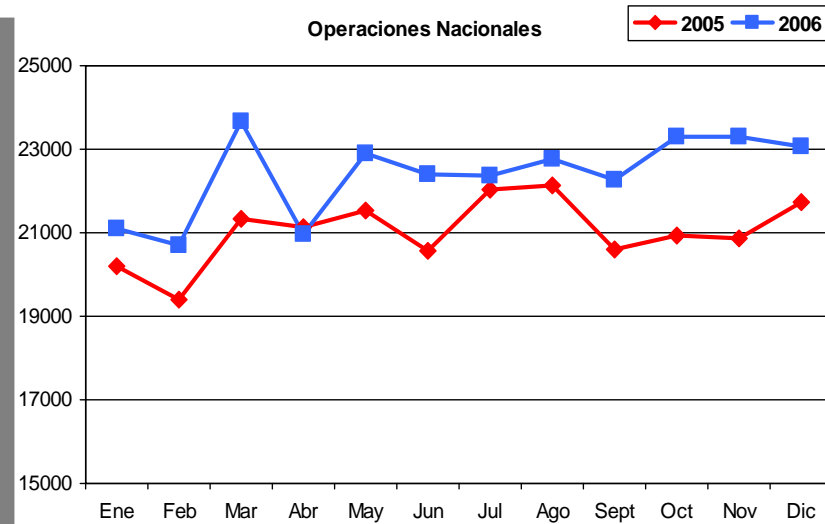


Estadísticas del Aeropuerto Internacional de la Ciudad de México Año 2006

	2005			2006			VAR. %		
	NAL	INT	Total	NAL	INT	Total	NAL	INT	Total
ENE	1,164,789	703,108	1,867,897	1,206,595	733,279	1,939,874	3.6	4.3	3.9
FEB	1,142,075	585,763	1,727,838	1,192,323	597,678	1,790,001	4.4	2.0	3.6
MAR	1,310,166	733,023	2,043,189	1,440,602	721,000	2,161,602	10.0	-1.6	5.8
ABR	1,248,943	637,371	1,886,314	1,325,314	746,945	2,072,259	6.1	17.2	9.9
MAY	1,359,339	660,682	2,020,021	1,373,961	686,665	2,060,626	1.1	3.9	2.0
JUN	1,317,958	710,185	2,028,143	1,283,708	743,136	2,026,844	-2.6	4.6	-0.1
JUL	1,467,899	914,355	2,382,254	1,436,271	924,191	2,360,462	-2.2	1.1	-0.9
AGO	1,411,560	814,086	2,225,646	1,368,694	827,349	2,196,043	-3.0	1.6	-1.3
SEP	1,207,826	659,505	1,867,331	1,188,661	645,205	1,833,866	-1.6	-2.2	-1.8
OCT	1,269,729	670,493	1,940,222	1,317,657	685,609	2,003,266	3.8	2.3	3.2
NOV	1,294,328	682,948	1,977,276	1,371,340	719,603	2,090,943	5.9	5.4	5.7
DIC	1,329,143	820,278	2,149,421	1,342,934	848,576	2,191,510	1.0	3.4	2.0
TOTAL	15,523,755	8,591,797	24,115,552	15,848,060	8,879,236	24,727,296	2.1	3.3	2.5



	2005			2006			VAR. %		
	NAL	INT	Total	NAL	INT	Total	NAL	INT	Total
ENE	20,188	6,395	26,583	22,065	7,038	29,103	9.3	10.1	9.5
FEB	19,398	6,077	25,475	20,689	6,241	26,930	6.7	2.7	5.7
MAR	21,350	6,842	28,192	23,658	6,955	30,613	10.8	1.7	8.6
ABR	21,118	6,584	27,702	20,958	6,954	27,912	-0.8	5.6	0.8
MAY	21,528	6,602	28,130	22,887	7,120	30,007	6.3	7.8	6.7
JUN	20,564	6,370	26,934	22,392	7,071	29,463	8.9	11.0	9.4
JUL	22,043	7,336	29,379	22,381	7,607	29,988	1.5	3.7	2.1
AGO	22,148	7,164	29,312	22,755	7,560	30,315	2.7	5.5	3.4
SEP	20,600	6,487	27,087	22,279	6,829	29,108	8.2	5.3	7.5
OCT	20,933	6,465	27,398	23,286	7,127	30,413	11.2	10.2	11.0
NOV	20,879	6,633	27,512	23,304	7,312	30,616	11.6	10.2	11.3
DIC	21,723	7,196	28,919	23,065	8,060	31,125	6.2	12.0	7.6
TOTAL	252,472	80,151	332,623	269,719	85,874	355,593	6.8	7.1	6.9



Movimiento Operacional Pasajeros Nacionales por Abordador



Aeropuerto Internacional de Ciudad de México

Aeropuerto Internacional de Ciudad de México

2006

LLEGADAS

SALIDAS

AEROCAR

%

SALA

%

PASILLO

%

AEROCAR

%

SALA

%

PASILLO

%

	AEROCAR	%	SALA	%	PASILLO	%	AEROCAR	%	SALA	%	PASILLO	%
ENE	79,612	6.6	163,003	13.5	356,500	29.5	71,075	5.9	108,173	9.0	428,232	35.5
FEB	78,248	6.6	162,293	13.6	337,264	28.3	77,750	6.5	109,652	9.2	427,116	35.8
MAR	93,647	6.5	186,837	13.0	417,680	29.0	92,727	6.4	122,867	8.5	526,844	36.6
ABR	62,484	4.7	172,308	13.0	416,327	31.4	59,919	4.5	116,157	8.8	498,119	37.6
MAY	76,053	5.5	179,267	13.0	422,991	30.8	70,445	5.1	108,842	7.9	516,363	37.6
JUN	80,464	6.3	147,340	11.5	402,750	31.4	73,006	5.7	91,565	7.1	488,583	38.1
JUL	60,686	4.2	169,678	11.8	477,172	33.2	57,445	4.0	119,043	8.3	552,247	38.5
AGO	54,699	4.0	180,876	13.2	441,944	32.3	50,906	3.7	121,075	8.8	519,194	37.9
SEP	64,026	5.4	167,388	14.1	356,610	30.0	57,038	4.8	107,673	9.1	435,926	36.7
OCT	72,934	5.5	186,740	14.2	386,547	29.3	69,664	5.3	118,607	9.0	483,165	36.7
NOV	84,382	6.2	179,966	13.1	410,290	29.9	82,268	6.0	123,887	9.0	490,547	35.8
DIC	103,495	7.7	161,207	12.0	382,412	28.5	103,828	7.7	128,216	9.5	463,776	34.5
TOTAL	910,730	5.7	2,056,903	13.0	4,808,487	30.3	866,071	5.5	1,375,757	8.7	5,830,112	36.8

Movimiento Operacional Pasajeros Internacionales por Abordador

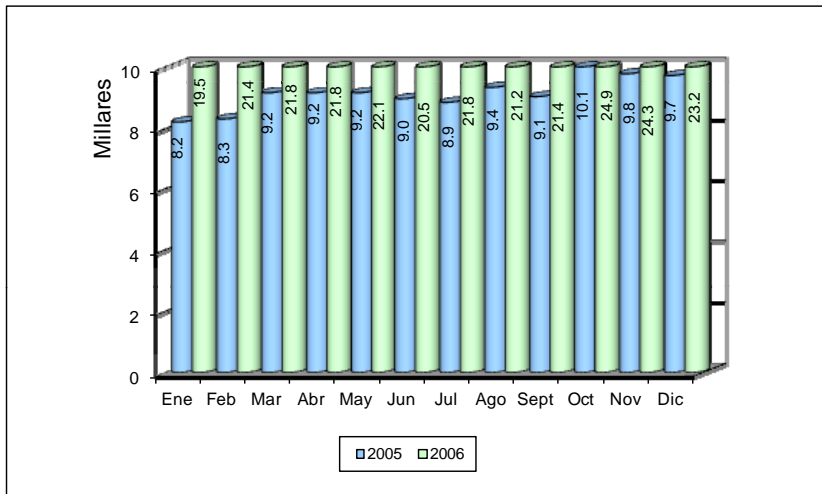


	2006											
	LLEGADAS						SALIDAS					
	AEROCAR	%	SALA	%	PASILLO	%	AEROCAR	%	SALA	%	PASILLO	%
ENE	4,357	0.6	50,305	6.9	319,146	43.5	5,431	0.7	28,179	3.8	325,861	44.4
FEB	4,186	0.7	31,834	5.3	265,344	44.4	3,371	0.6	21,047	3.5	271,896	45.5
MAR	4,251	0.6	48,416	6.7	299,569	41.5	4,338	0.6	35,227	4.9	329,199	45.7
ABR	3,824	0.5	46,045	6.2	306,072	41.0	4,011	0.5	25,566	3.4	361,427	48.4
MAY	4,356	0.6	40,393	5.9	295,207	43.0	3,992	0.6	23,541	3.4	319,176	46.5
JUN	6,111	0.8	49,509	6.7	323,172	43.5	5,447	0.7	24,085	3.2	334,812	45.1
JUL	8,215	0.9	57,738	6.2	379,027	41.0	6,382	0.7	34,524	3.7	438,305	47.4
AGO	10,151	1.2	66,481	8.0	349,653	42.3	5,870	0.7	21,829	2.6	373,365	45.1
SEP	9,809	1.5	35,754	5.5	271,879	42.1	4,494	0.7	15,013	2.3	308,256	47.8
OCT	5,587	0.8	45,117	6.6	303,720	44.3	5,052	0.7	18,172	2.7	307,961	44.9
NOV	5,919	0.8	55,399	7.7	309,577	43.0	7,721	1.1	26,379	3.7	314,608	43.7
DIC	7,665	0.9	64,421	7.6	362,574	42.7	9,552	1.1	30,638	3.6	373,726	44.0
TOTAL	74,431	0.84	591,412	6.7	3,784,940	42.6	65,661	0.7	304,200	3.4	4,058,592	45.7

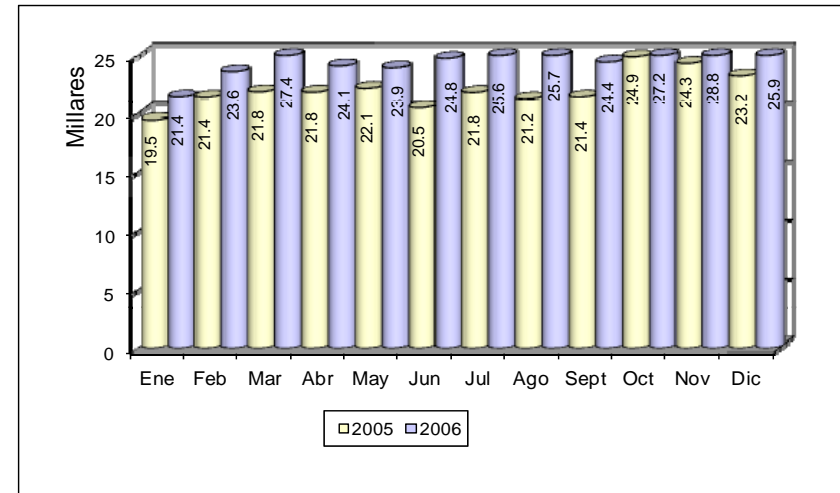
CARGA EN TONELADAS								
	2005			2006			Variación Porcentual	
	NAC	INTER	TOTAL	NAC	INTER	TOTAL	NAC	INTER
ENE	8,222.00	19,460.10	27,682.10	8,465.16	21,406.19	29,871.35	2.96	10.00
FEB	8,322.00	21,378.50	29,700.50	7,239.55	23,593.10	30,832.65	-13.01	10.36
MAR	9,176.20	21,845.40	31,021.60	9,869.29	27,381.09	37,250.38	7.55	25.34
ABR	9,176.50	21,808.20	30,984.70	8,635.44	24,099.36	32,734.80	-5.90	10.51
MAY	9,177.30	22,141.90	31,319.20	8,888.48	23,923.44	32,811.92	-3.15	8.05
JUN	8,980.50	20,466.30	29,446.80	9,315.88	24,750.65	34,066.53	3.73	20.93
JUL	8,862.30	21,787.30	30,649.60	8,888.09	25,589.27	34,477.36	0.29	17.45
AGO	9,352.70	21,242.70	30,595.40	8,853.57	25,686.53	34,540.10	-5.34	20.92
SEP	9,051.20	21,394.20	30,445.40	8,378.47	24,431.72	32,810.19	-7.43	14.20
OCT	10,142.30	24,884.50	35,026.80	9,355.69	27,169.69	36,525.38	-7.76	9.18
NOV	9,773.60	24,314.70	34,088.30	9,355.94	28,827.36	38,183.30	-4.27	18.56
DIC	9,716.90	23,233.80	32,950.70	9,206.28	25,895.50	35,101.78	-5.25	11.46
Total	109,953.50	263,957.60	373,911.10	106,451.84	302,753.90	409,205.74	-3.18	14.70



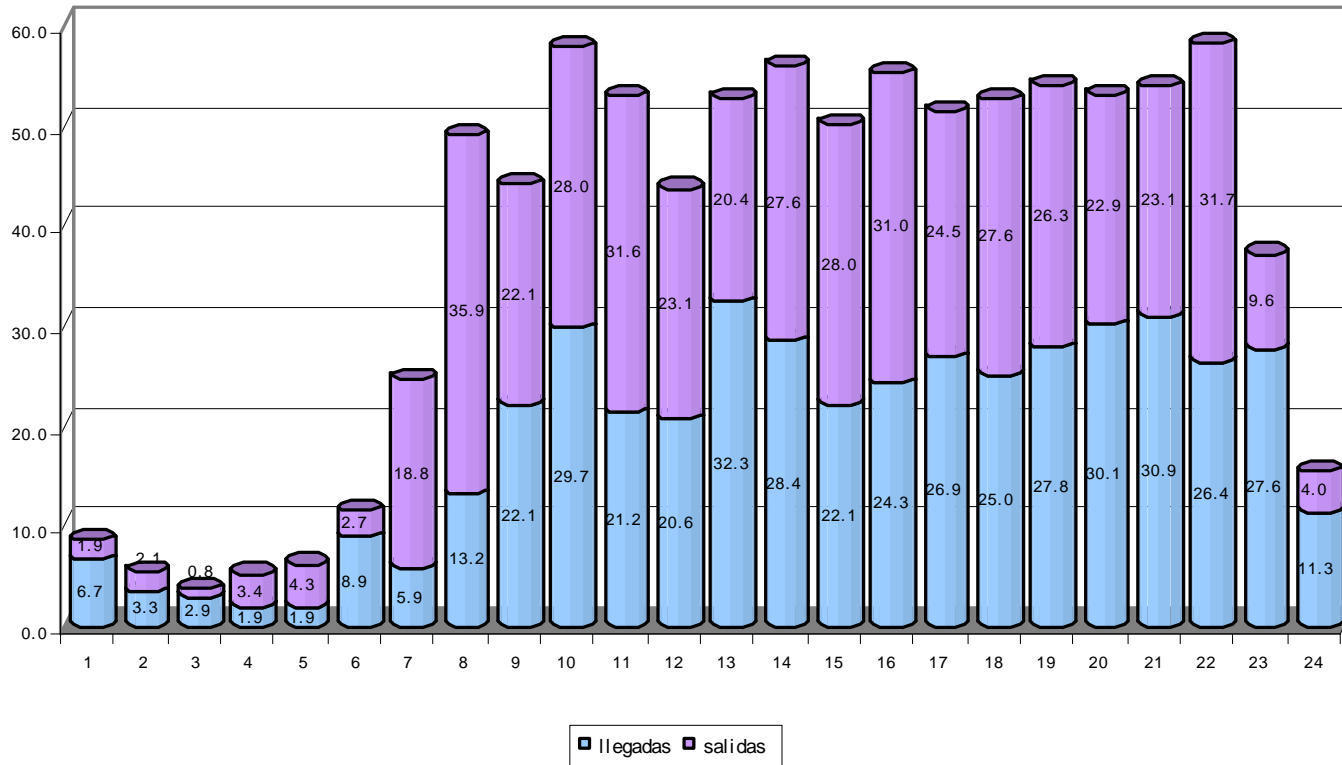
Carga nacional transportada (Toneladas)



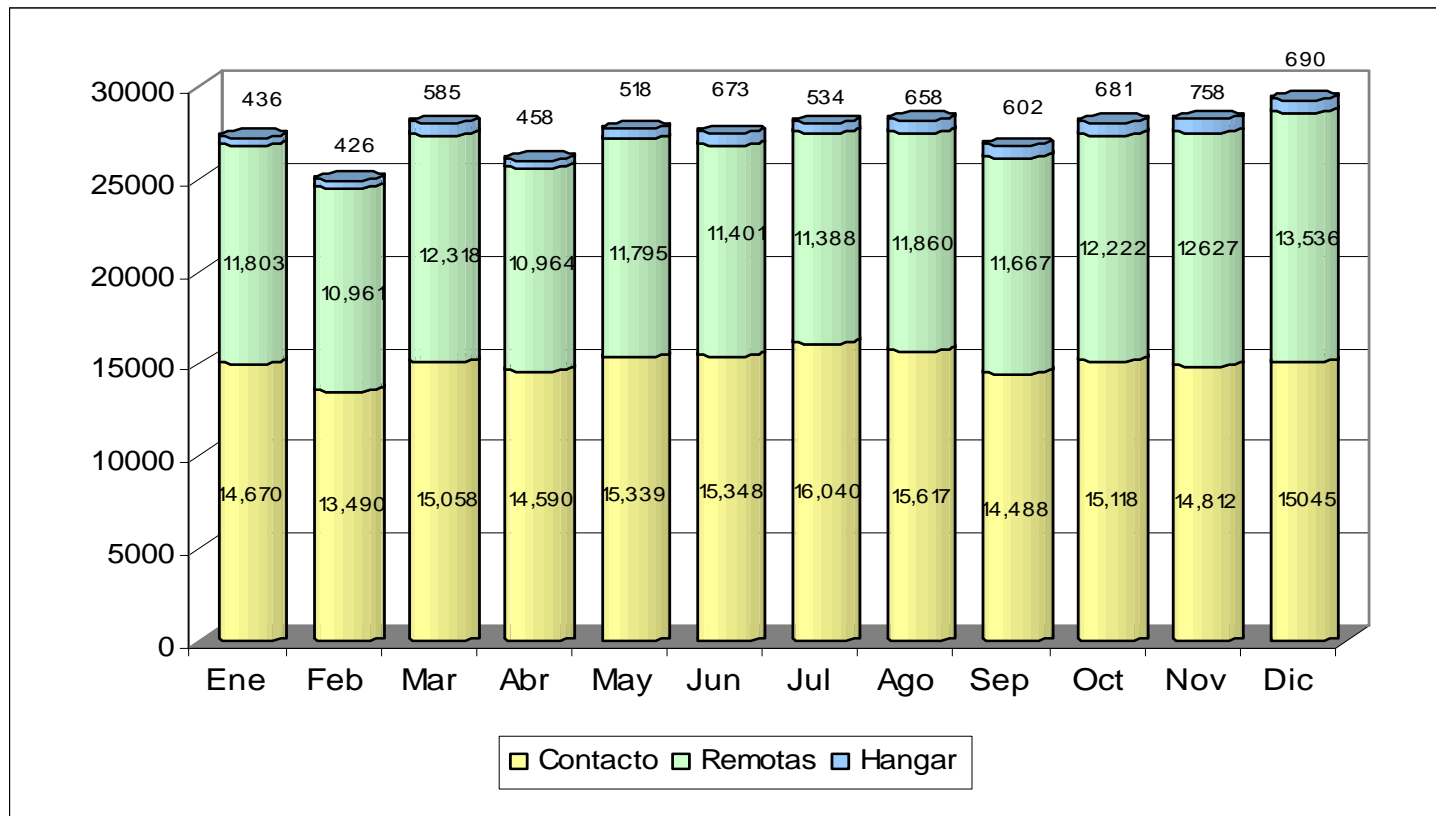
Carga internacional transportada (Toneladas)



Operaciones Promedio por Hora



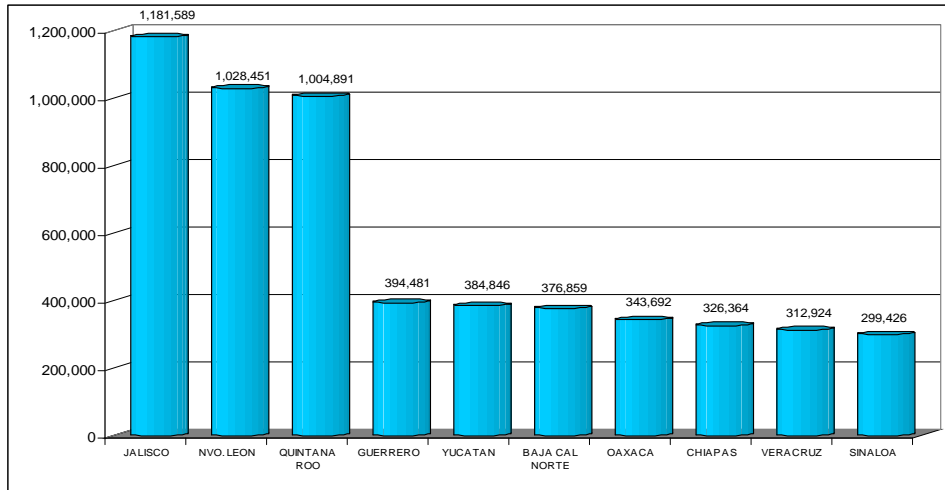
Operaciones por Posición



Movimiento Operacional Operaciones por Origen y Tipo

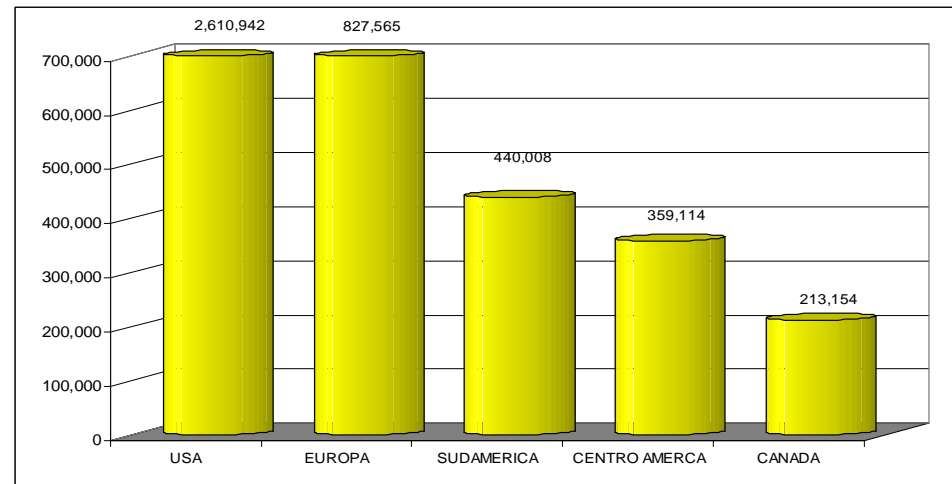


	2005						2006						Comercial (Pax)	
	NACIONAL			INTERNACIONAL			NACIONAL			INTERNACIONAL			VAR. %	
	Comercial		Aviación	Comercial		Aviación	Comercial		Aviación	Comercial		Aviación		
	Pax	Carga	General	Pax	Carga	General	Pax	Carga	General	Pax	Carga	General	Nac.	Int.
ENE	17,664	475	2,049	6,035	353	7	19,507	628	1,930	6,612	426	0	10.4	9.6
FEB	16,675	512	2,211	5,640	420	17	18,021	615	2,053	5,758	483	0	8.1	2.1
MAR	18,436	616	2,298	6,376	454	12	20,318	730	2,610	6,422	523	10	10.2	0.7
ABR	18,009	632	2,477	6,126	447	11	18,433	625	1,900	6,458	496	0	2.4	5.4
MAY	18,305	613	2,610	6,151	435	16	19,826	706	2,355	6,607	513	0	8.3	7.4
JUN	17,673	655	2,236	5,980	379	11	19,610	741	2,041	6,556	515	0	11.0	9.6
JUL	19,407	598	2,038	6,880	451	5	19,732	623	2,026	7,089	518	0	1.7	3.0
AGO	19,265	670	2,213	6,729	433	2	19,855	720	2,180	7,023	537	0	3.1	4.4
SEP	17,795	612	2,193	6,046	441	0	19,254	674	2,351	6,288	541	0	8.2	4.0
OCT	18,160	589	2,184	5,971	494	0	20,183	711	2,392	6,543	584	0	11.1	9.6
NOV	18,095	630	2,154	6,116	517	0	20,214	671	2,419	6,662	650	0	11.7	8.9
DIC	19,101	675	1,947	6,702	494	0	20,630	581	1,854	7,494	566	0	8.0	11.8
TOTAL	218,585	7,277	26,610	74,752	5,318	81	235,583	8,025	26,111	79,512	6,352	10		



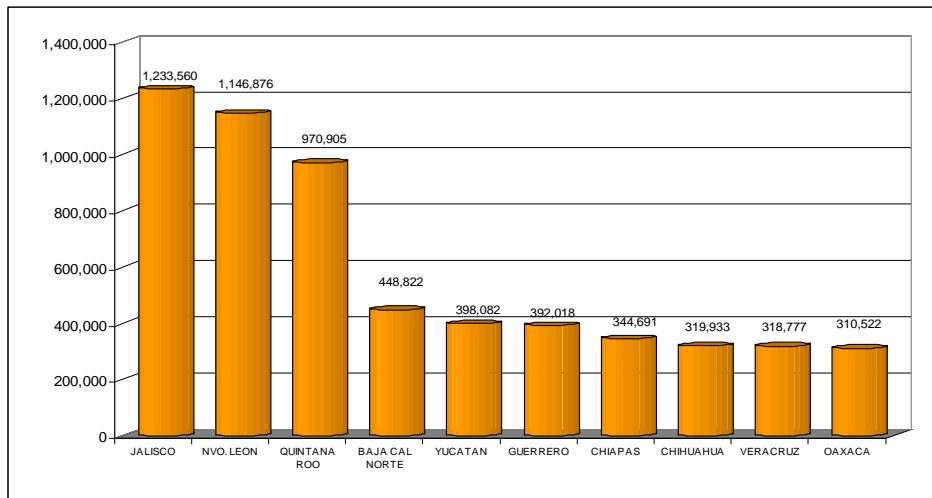
Pasajeros Nacionales

Pasajeros Internacionales



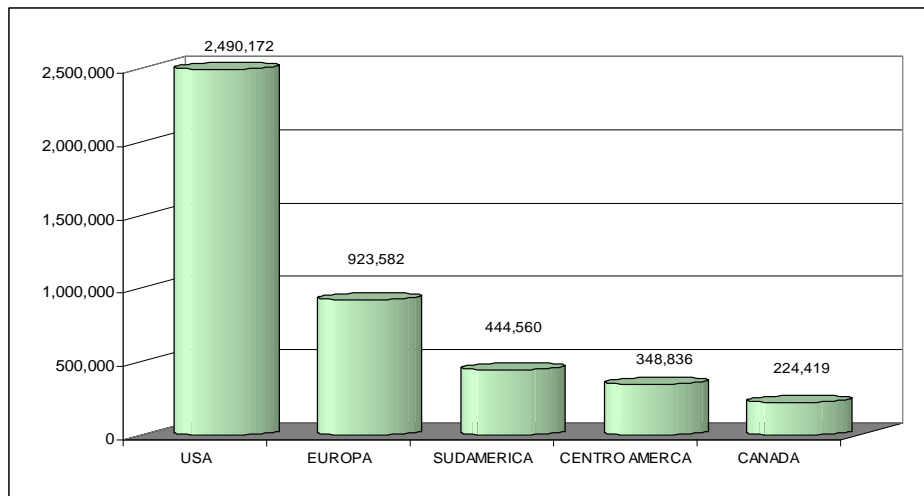
Europa = Europa + resto del mundo

Enero-Diciembre



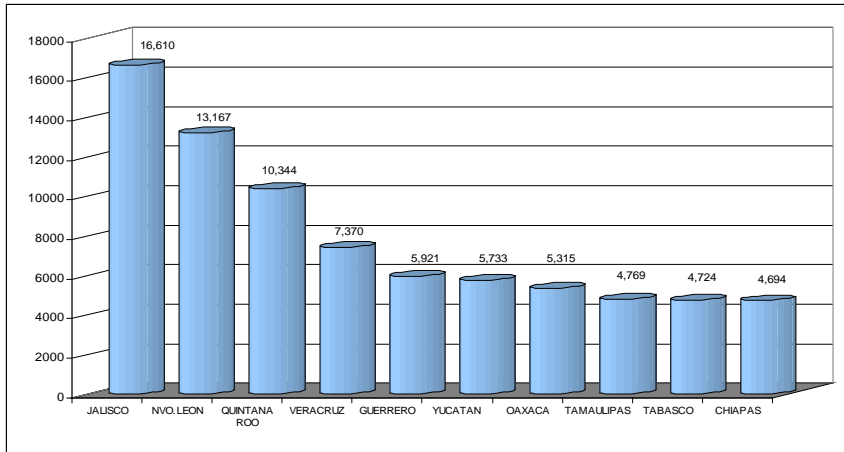
Pasajeros Nacionales

Pasajeros Internacionales



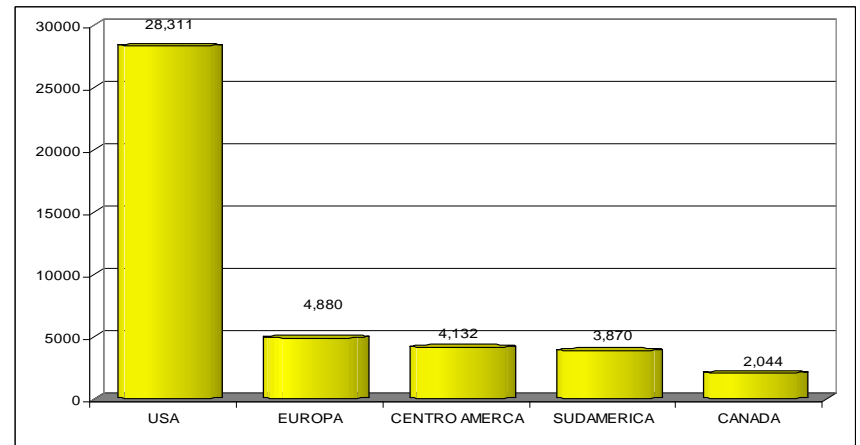
Europa = Europa + resto del mundo

Enero-Diciembre



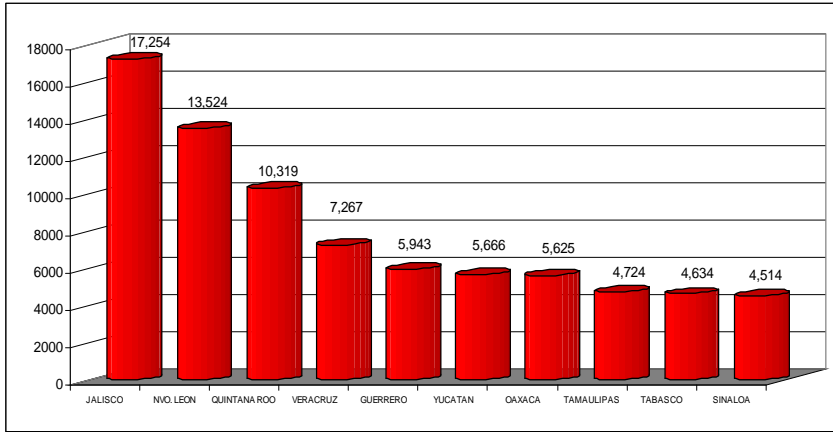
Operaciones Nacionales

Operaciones Internacionales

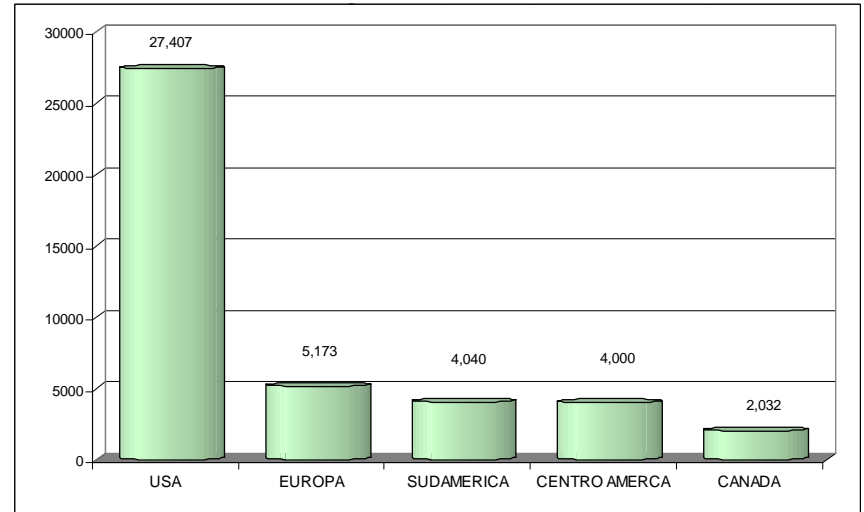


Europa = Europa + resto del mundo

Enero-Diciembre



Operaciones Nacionales



Europa = Europa + resto del mundo

Enero-Diciembre